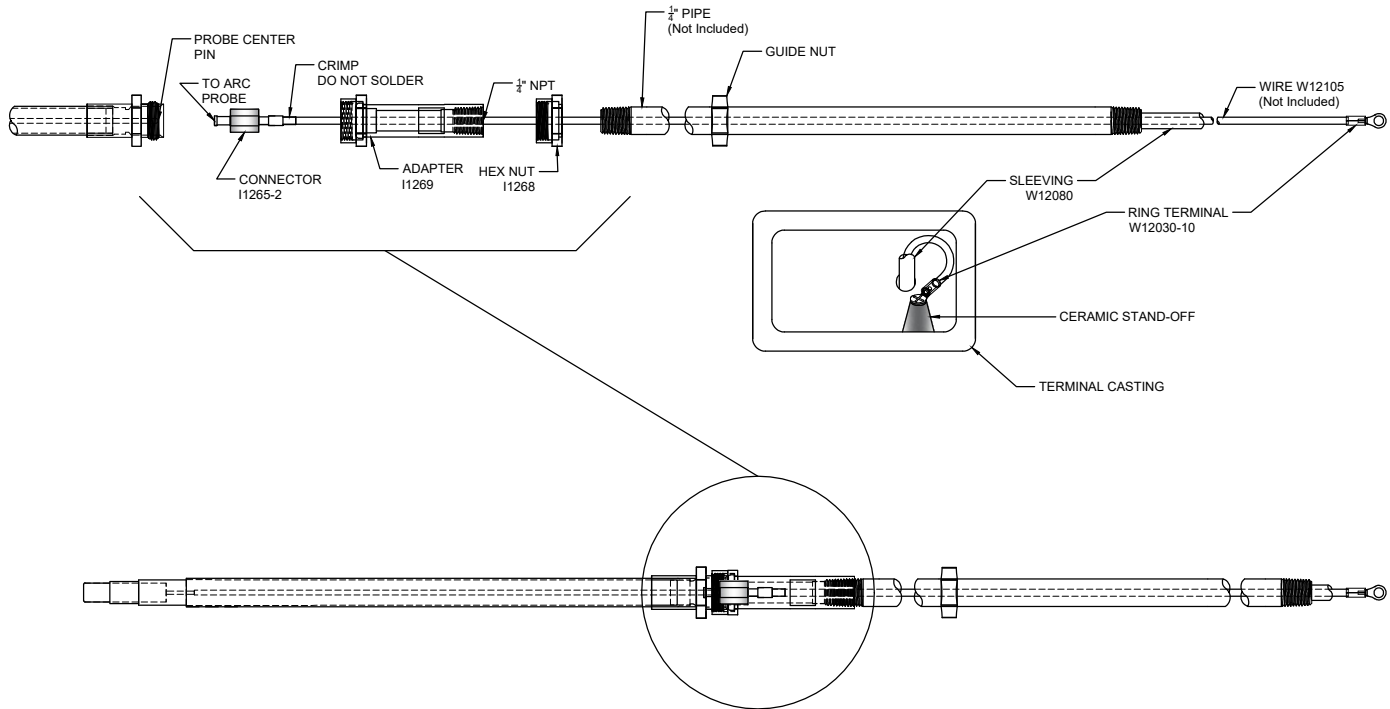


Socket Assembly Spare Parts Kit # I-1001D




POWER ARC PROBE ASSEMBLY

SOCKET ASSEMBLY INSTALLATION INSTRUCTIONS

- Insert wire into connector I1265-2 and crimp.
- Slip Hex Nut I1268 into position over Adapter I1269 as shown.
- Screw Adapter I1269 onto end of $\frac{1}{4}$ " pipe with guide nut.
- Screw opposite end of the $\frac{1}{4}$ " pipe into Terminal Casting.
- Thread Wire W12105 through Adapter I1269, Hex Nut I1268, $\frac{1}{4}$ " Pipe and Terminal Casting.
- Push Connector I1265-2 and screw Hex Nut I1268 onto Arc Probe.
- Cut Wire W12105 to length (Approximately 3" inside Casting).
- Slip Sleeve W12080 over Wire W12105, leaving 1" exposed.
- Strip Wire W12105.
- Crimp Ring Terminal W12030-10 to Wire W10105 and fasten to Ceramic Stand-Off.

FOR DIRECT SUPPORT

Call (410) 876-3616
 Fax (410) 876-9225
 info@icimarine.com

 Frederick Cowan Products by Instruments Controls Inc. marine and industrial automation		
271 East Green St. Westminster, MD. 21157		
Ph. 410-876-3616 Fax. 410-876-9225		
MAT'L	SCALE	DRAWN BY DC APP. BY SH
TITLE Socket Assembly Spare Parts Kit I-1001D		
DATE 1/25/19	DRAWING NUMBER A3201-9	